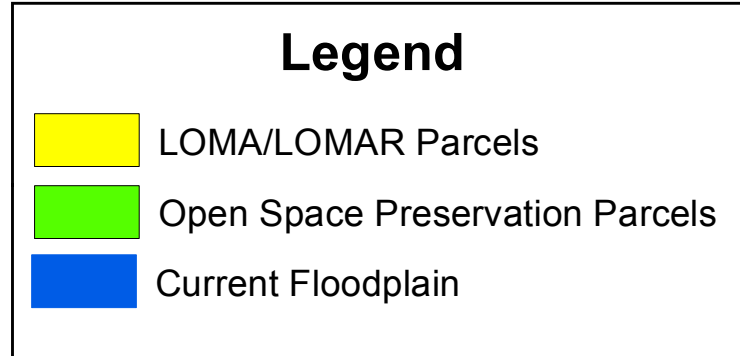
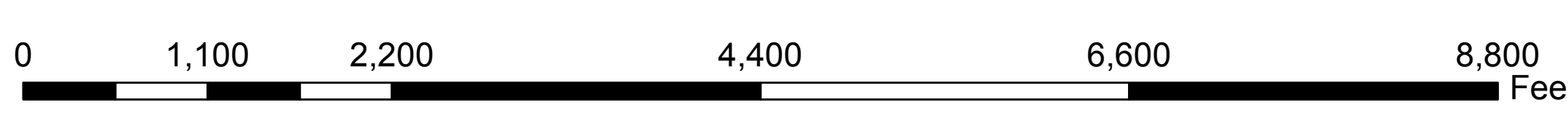
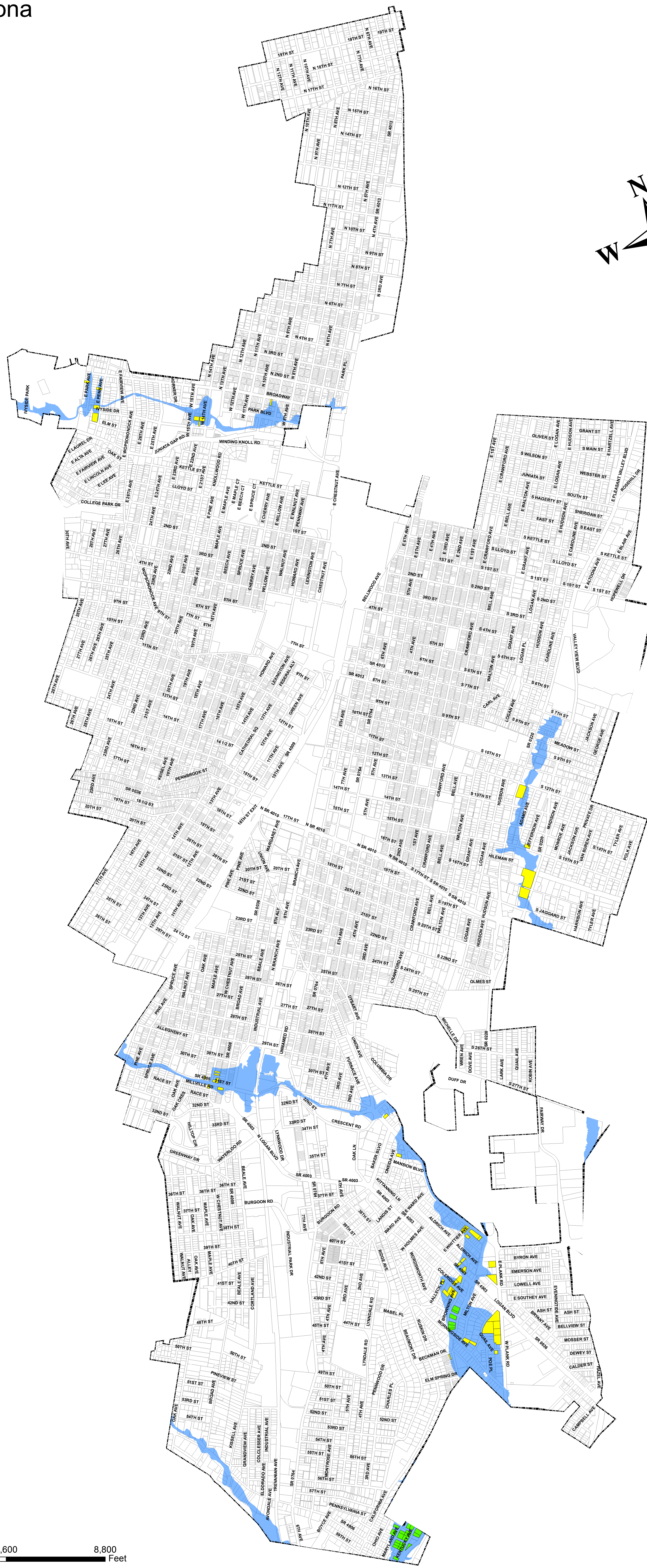
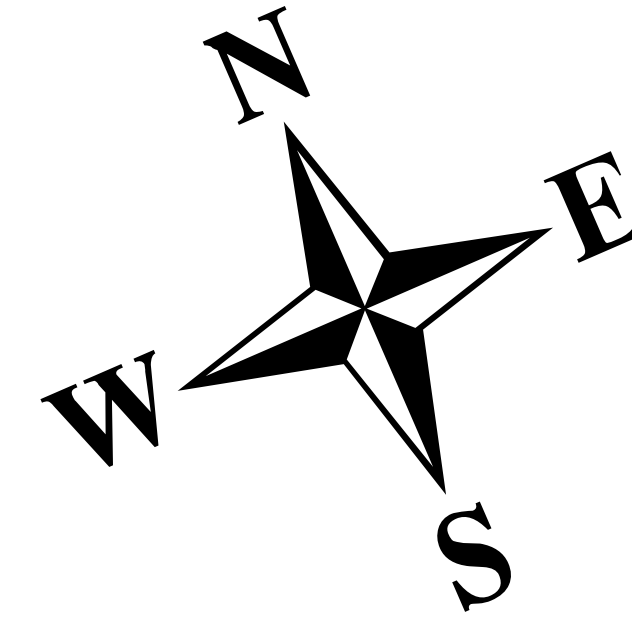


# Floodplains in the City of Altoona

Within the City, the areas in blue were designated as Special Flood Hazard Areas (1% annual chance of inundation, also commonly known as the 100 year floodplain and floodway) by the Federal Emergency Management Agency (FEMA) on March 2, 2012. Lenders, insurers, and City regulations currently address this area as the floodplain and floodway. Questions about any property, as well as an official determination of its location in any floodplain, should be directed to Rob Crossman, Engineering Tech, at the City of Altoona's Department of Public Works: phone (814) 949-2446.



LOMA/LOMAR parcels are excluded from the floodplain. Open space preservation parcels are City-owned properties that were acquired with funding from the Federal Emergency Management Agency - they must remain as open space.



This map was last updated on:  
February 21, 2017